

CodeSet 701 - Bang&Olufsen



See: Command 039



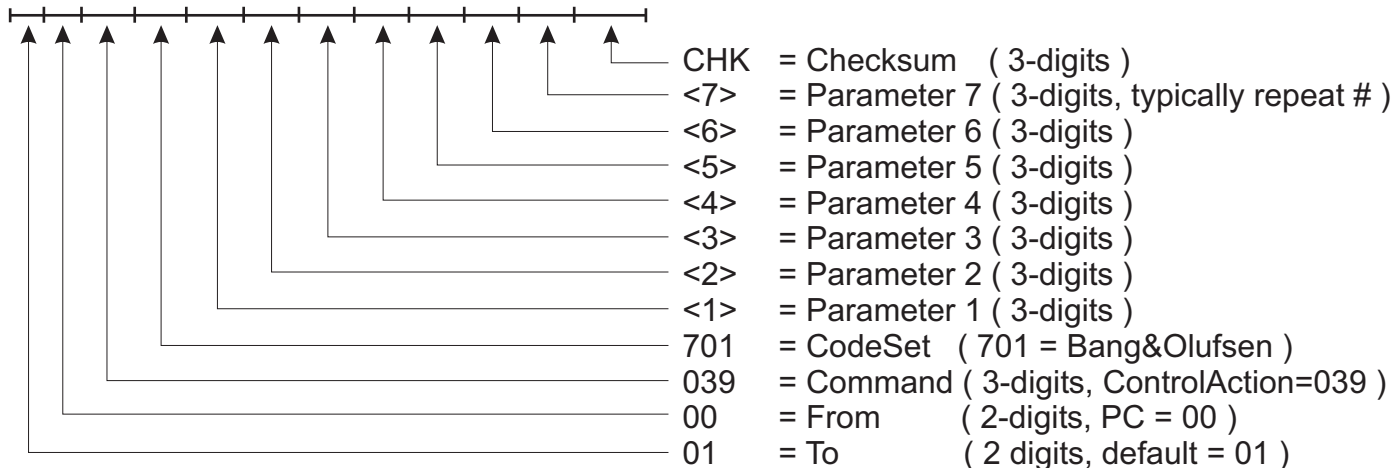
Command 039 is used to execute CodeSet 701 (Bang&Olufsen).

CodeSet 701 holds a number of parameters, allowing you to manipulate the behavior of the signals. You can instruct the code to be send as normal InfraRed code, as InfraRed link code or as digital signals.

We offer special ApplicationNotes showing how to control a BeoSystem by IR or digital signals from a computer, by means of the TT455-RT-238.

See our web-site: [Support | ApplicationNotes](#)

0100039701<1><2><3><4><5><6><7>CHK



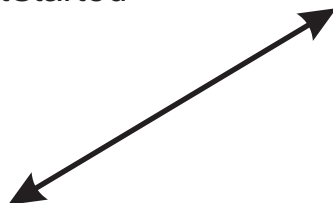
CodeSet 701 parameters 1-7

Par 1	Par 2	Par 3	Par 4	Par 5	Par 6	Par 7
Address	Command	Output	Format	Unused	Unused	Repeat
TV, Radio etc.	5, Go, etc.	IR or Digital	Remote or Link			

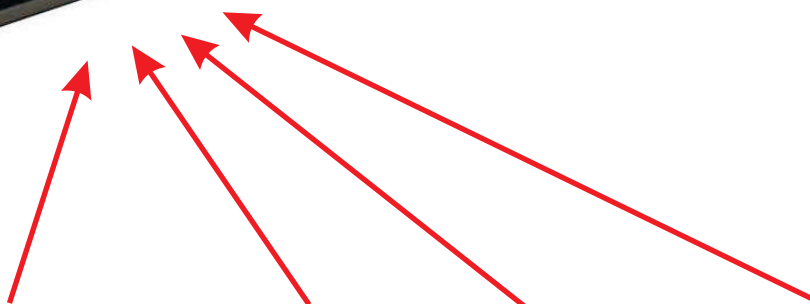
The codes you want to transmit can be copied from your B&O remote control.

Connect a TT455-RT-238 and startup our Configurator program.

See our web-site: [Support | GetStarted](#)



TT455-RT-238



Keyring

Short push: On
Long push: Off



BeoLink1000
Beo4



Beocom 6000

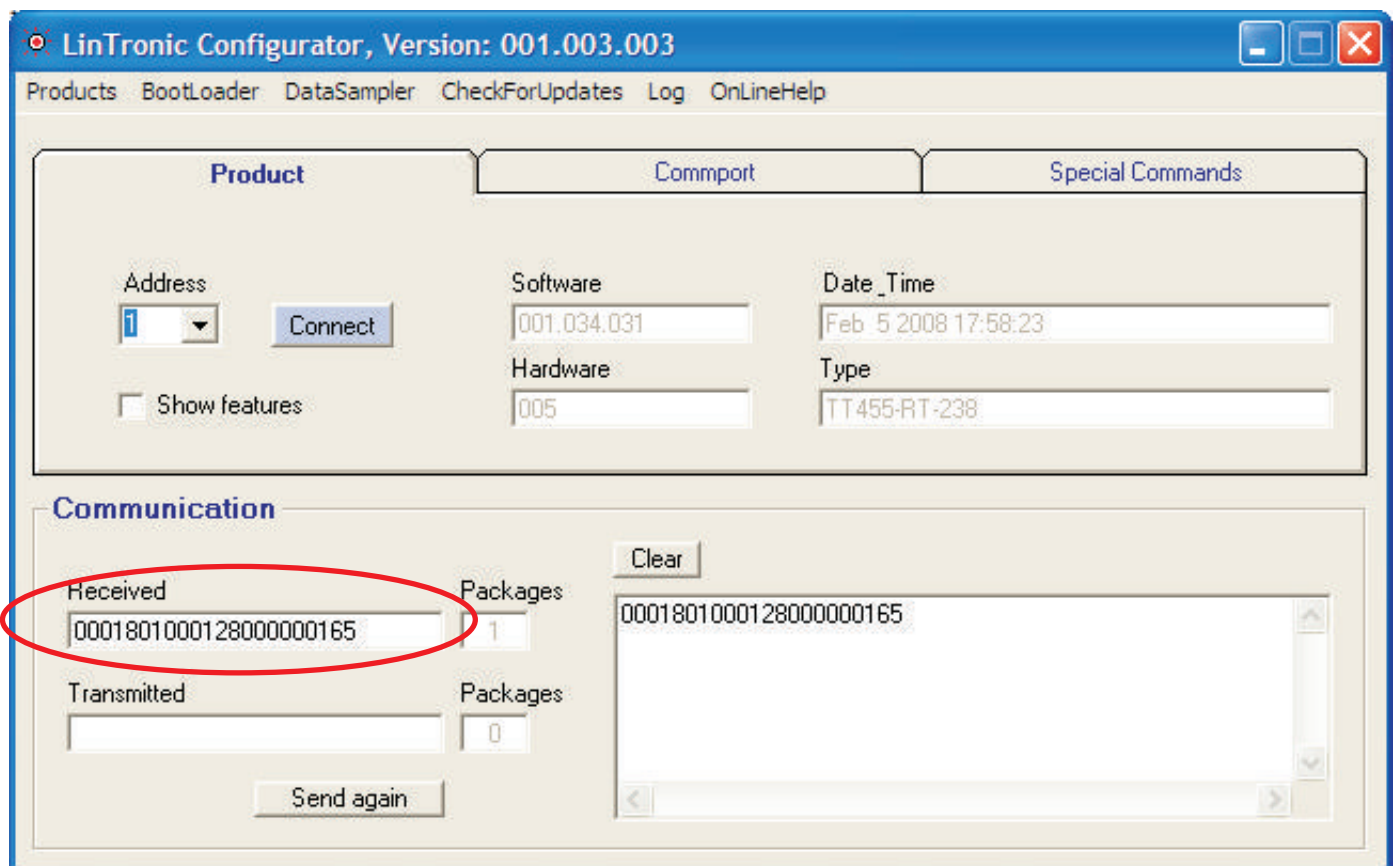


A The wheel sends audio volume
V The wheel sends video volume
o The wheel sends link codes



Beo5

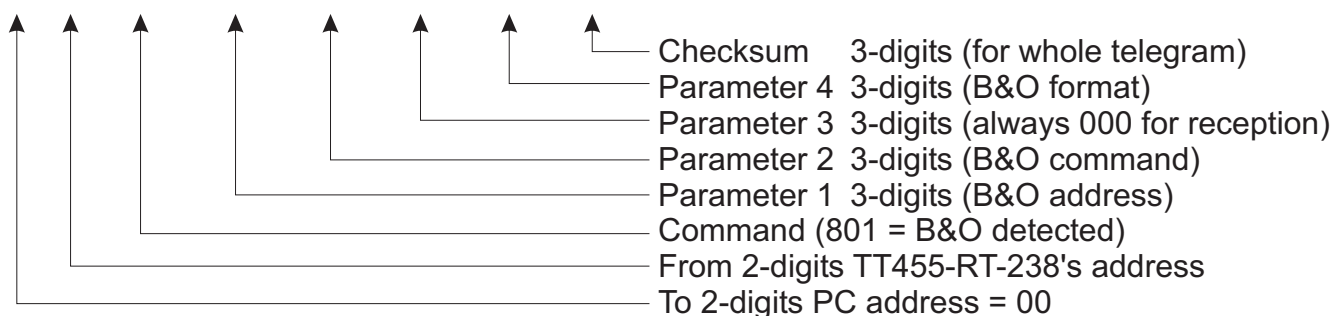
Standard mode recommended



If you connect a TT455-RT-238 to your computer and start up our Configurator, you can copy the codes you want to use, directly from the B&O remote.

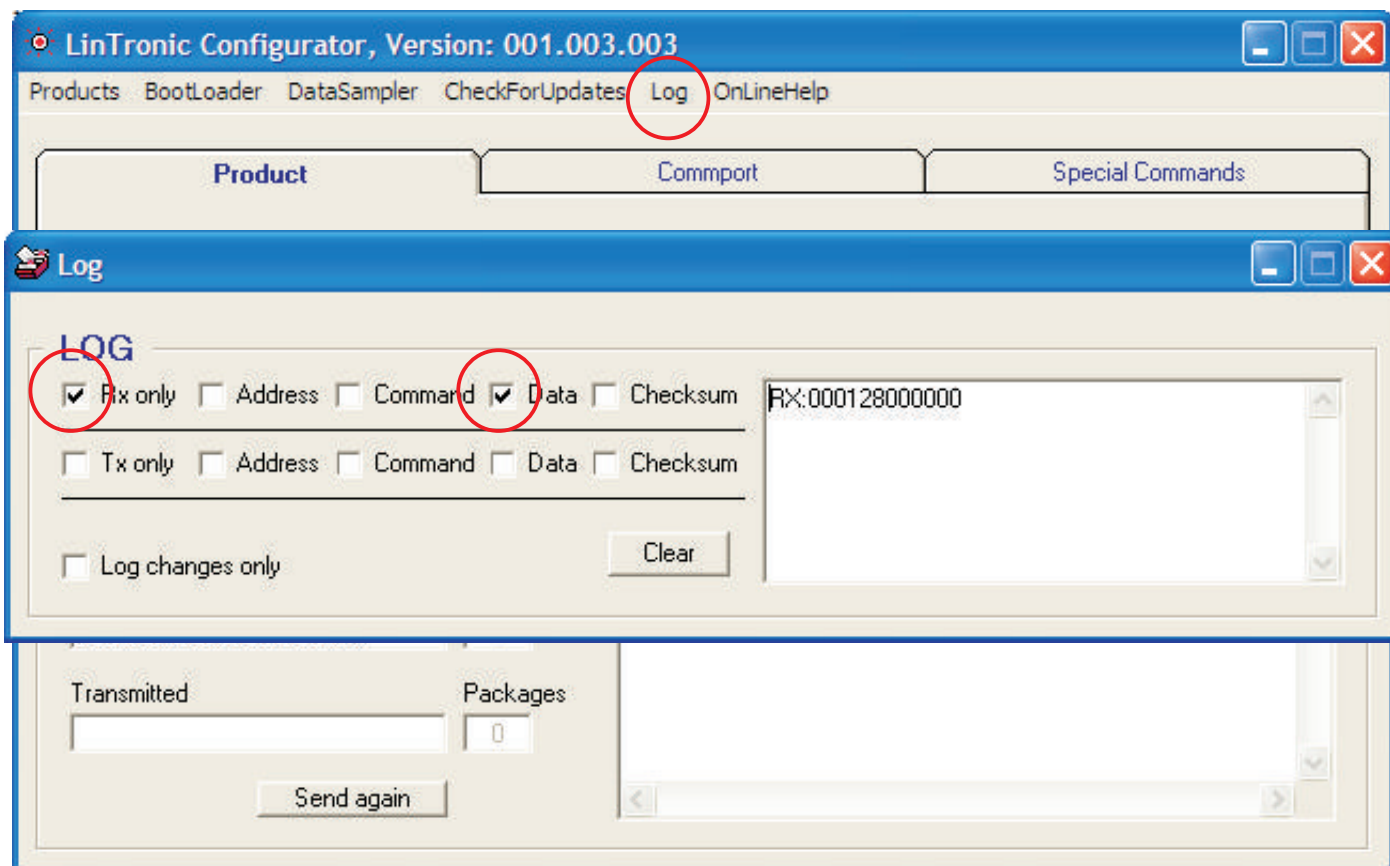
A received command 801 (B&O detected) holds the following parameters:

0001801000128000000165



The blue section (parameter 1-4) can be inserted directly in your outgoing command 039, followed by parameter 5 (000) and parameter 6 (000) and a repeatnumber (001):
01000397010001280000000000000001CHK

All you need to do is calculate checksum or insert "---" instead of "CHK".



Or you can activate the LOG and check RxOnly and Data, which will strip off what you do not want to see. This makes it a little easier to see what is coming in.

It is recommend you CLEAR on every new activation of the remote, but not required.

You will soon learn that some of the buttons on the B&O remotes (depending on mode), send out more than one code.

Some buttons send out a code when you activate it. And if you hold the button activated, a different code is transmitted from the remote.

Also some buttons do not send as frequent as you could expect.

For example LIST and the numbers are only send out ONCE. But the directions keys and volume is repeated as long as the button is activated.

Personally I preferre this way of reading the remote.

CommandList

OnLineHelp NotePad

Reserved for future use Automatic continuous test - careful !

Download commands from web-database Copy commands from your remote control

Copy RemoteControl

☐ Stop copying

☐ Your devices (IR 36-40 KHz)

☒ Bang and Olufsen remote

RemoteControlFunction

POWER

☐ Alphabetic

☐ AutoNextFunction

Disable decoder

213/713/716 NEC

219/719 TA

227/727 Pioneer

Decoding alternatives

CommandList

BrandName (Sony, Bose, etc.) Device (TV, DVD, CD, etc.) TypeNumber

BANGOLUFSEN TV ALL

701000003000000000000001=3

701000002000000000000001=2

701000001000000000000001=1

7010001280000000000000=TV

Test

Repeat

001

Upload to Web

Local CommandListFiles

☒ No sorting ☐ ... by Code ☐ ... by Command

Clear Save

If you simply want to get it over and done, without really understanding it all, then you can go to CommandList and copy the codes, which will show up fully decoded and ready to transmit.

It is recommended you set the RepeatNumber to 001.

You can manually edit the name of the command.

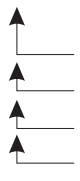
You can even mark the commands (blue) and click TEST which will generate a Command 039 sending out the code through the TT455-RT-238, including checksum (see TRANSMITTED text field on Configurator).

Controlling a BeoSystem from the computer

We have a special ApplicationNote on this subject. See our web-site:
[Support](#) | [ApplicationNotes](#) | [TT455-RT-238](#) | [Controlling a BeoSystem ...](#)

CodeSet 701's parameter 3 allows you to specify whether you want the command to be transmitted as InfraRed or as a digital signal connected to the BeoSystem's IR input.

70100012800000000000001=Command

- 
- 000 = InfraRed (455 KHz)
 - 001 = Signal is send on TT455-RT-238's digital output 1
 - 002 = Signal is send on TT455-RT-238's digital output 2
 - 003 = Signal is send on TT455-RT-238's digital output 1 and 3

NOTE:


If you want to send the code on the digital outputs connected to the IR input of a BeoSystem, then the digital outputs pull-up resistor must be removed. See our web-site:
[Support](#) | [ApplicationNotes](#) | [TT455-RT-238](#) | [Removing pull-up ...](#)

Sending/Receiving commands on BeoLink

We have a special ApplicationNote on this subject. See our web-site:
[Support](#) | [ApplicationNotes](#) | [TT455-RT-238](#) | [Sending/Receiving commands on BeoLink](#)

CodeSet 701's parameter 4 allows you to specify in which format you want the command transmitted.

70100012800000000000001=Command

- 
- 000 = Normal (most B&O remote codes)
 - 001 = Vtape2 (example)
 - 008 = Link

NOTE:

Please observe that the decoder or log, will tell you in parameter 4, in which format the command was received/decoded.

